

A woman with short dark hair is shown in profile, sitting on a grey, horse-shaped sculpture. She is wearing a long-sleeved, knee-length dress with a complex geometric pattern in white, red, and black, accented with orange trim at the neck, cuffs, and hem. Her legs are covered in grey tights, and she is wearing black boots with long, dark socks. The sculpture is supported by four grey legs. The background is a dark, textured wall with a vertical blue stripe. A rope is visible on the right side of the frame.

numer**o**primo



numer**o**primo

Fall - Winter
2021-2022



MAGLIA: NI107B
GONNA: NI401D
CAMICIA: NI500C
JEANS: NI300J
ABITO: NI610C



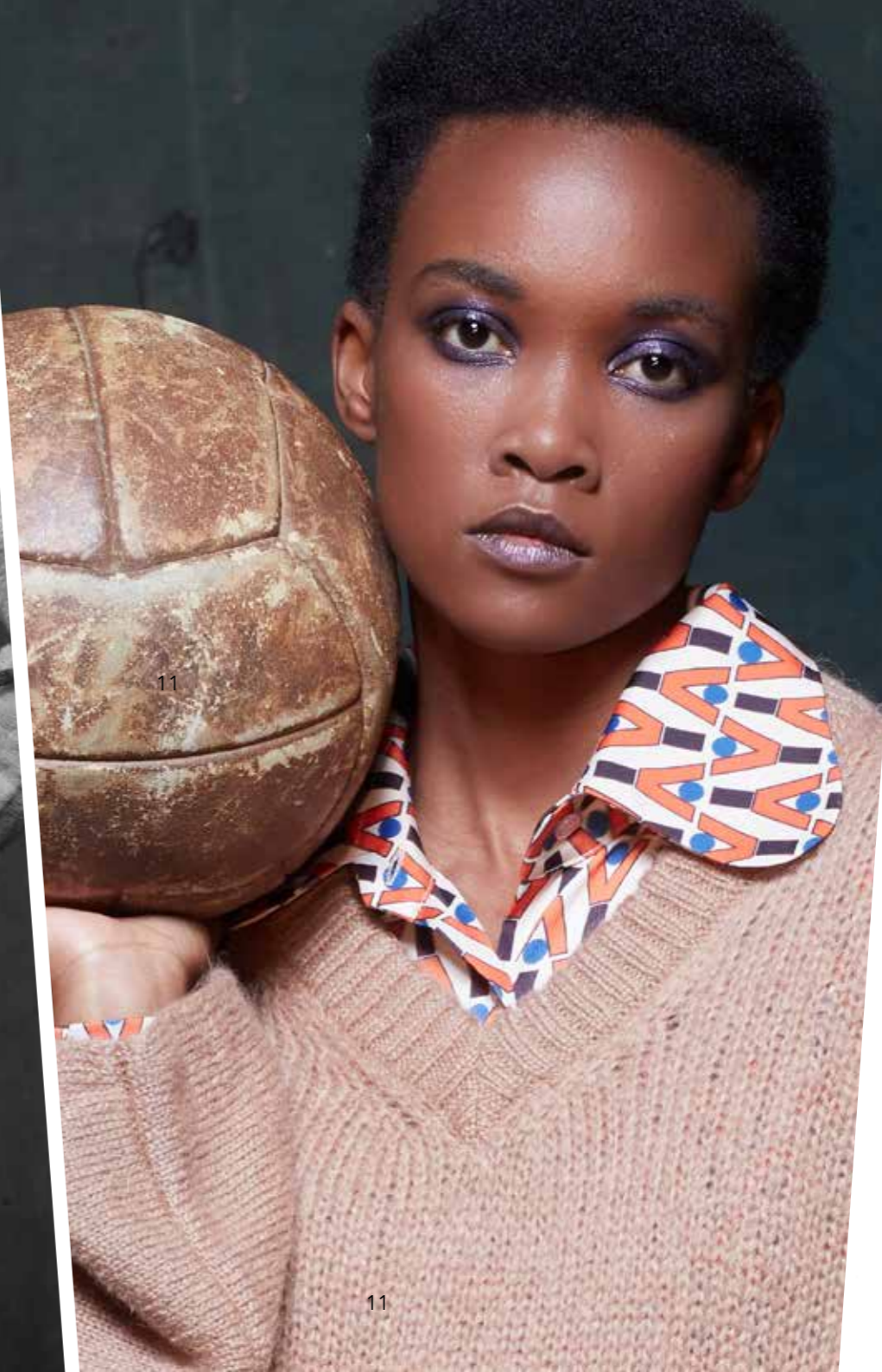
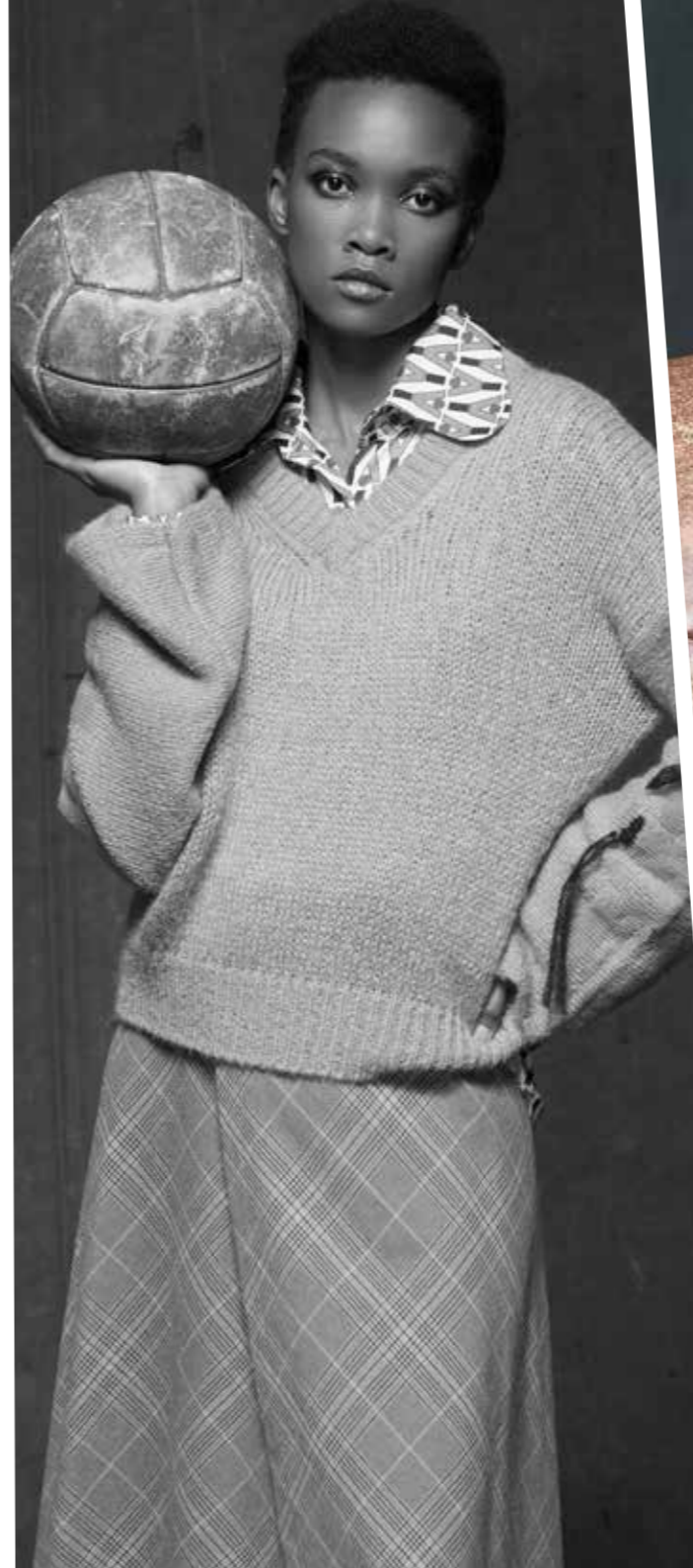




DOLCEVITA: NI102K
MAGLIA: NI105K
CANOTTA: NI104K
PANTALONE: NI310C



MAGLIA: NI117V
BLUSA: NI502C
PANTALONE: NI303D
CINTURA: NI705E





BLAZER: NI202D
CAMICIA: NI500C
PANTALONE: NI303D
TOP: NI100D

DREAM AT EVERY AGE

TOP: NI100D
GONNA: NI401D
MAGLIA: NI121V
CINTURA: NI705E



MAGLIA: NI128R
JEANS: NI300J
BLUSA: NI504C
PANTALONE: NI315C



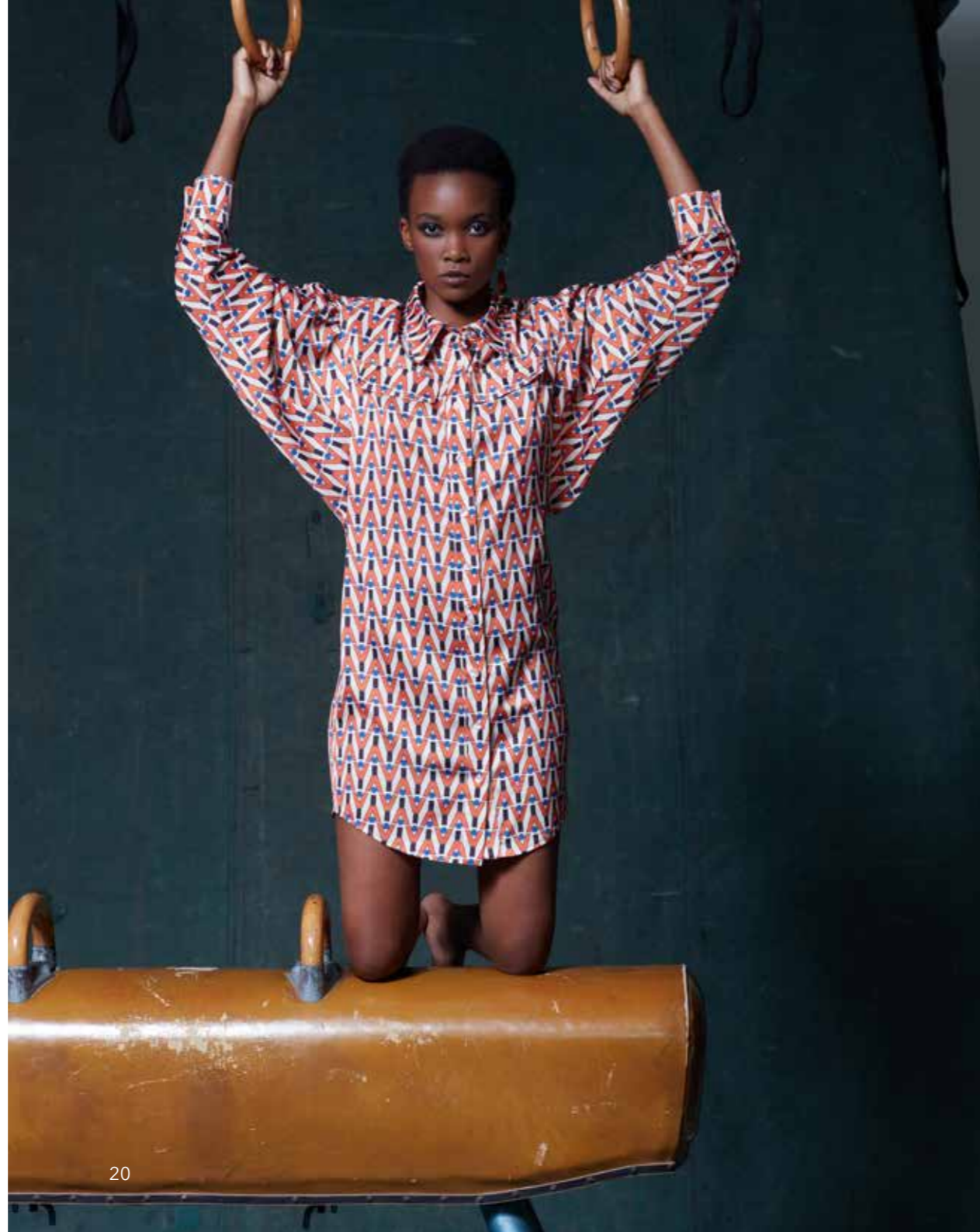
DREAM EVERYWHERE

MAGLIA: NI128R
JEANS: NI300J





ABITO: NI600C



MAGLIA: NI124B
MINIGONNA: NI402V
MAGLIA: NI109B
PANTALONE: NI313C





MAGLIA: NI124B
MINIGONNA: NI402V







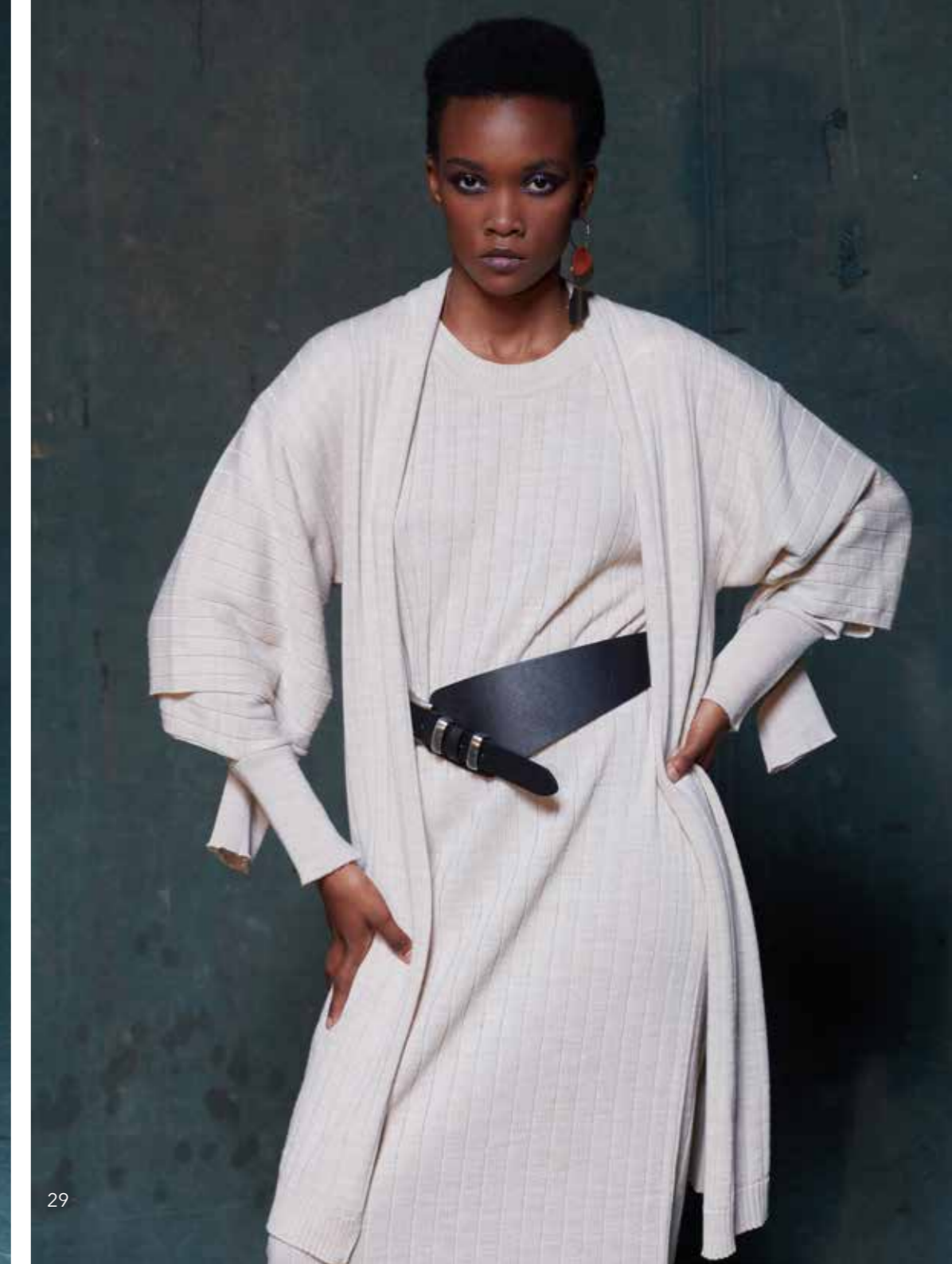
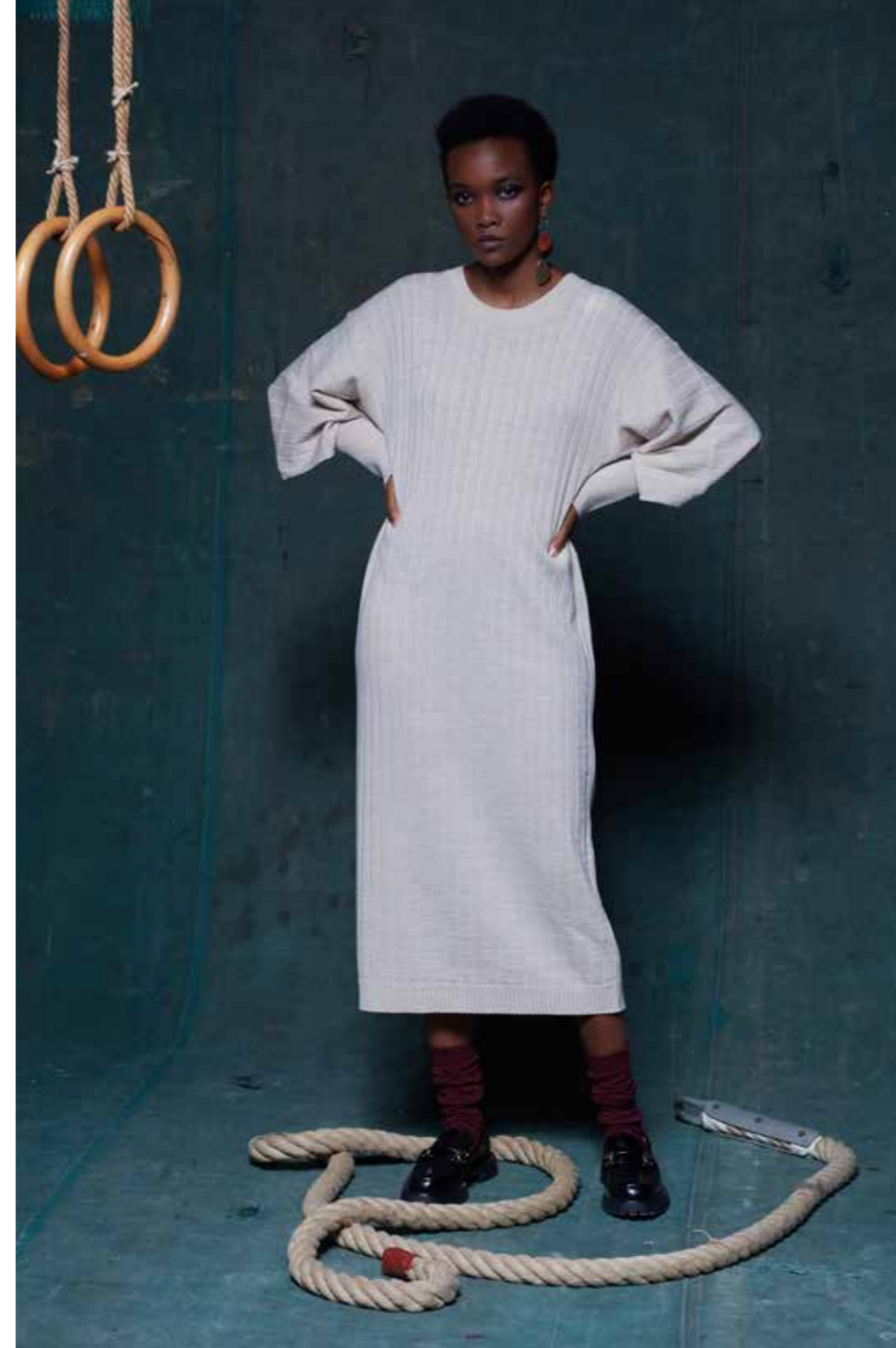
CAMICIA: NI500C
CARDIGAN: NI214R
PANTALONE: NI311C
CINTURA: NI703E



BLUSA: NI505C
PANTALONE: NI312C



CARDIGAN: NI212V
ABITO: NI608V
CINTURA: NI702E





CARDIGAN: NI210B
GIACCA: NI206C
CANOTTA: NI101C
LEGGINGS: NI316C



GILET: NI106B
CARDIGAN: NI209B
JEANS: NI301J
CINTURA: NI705E



MAGLIA: NI119V
MAGLIA: NI119V
MAGLIA: NI127R





BLUSA: NI503C



MAGLIA: NI122V
BLUSA: NI503C
PANTALONE: NI314C



MAGLIA: NI118V
ABITO: NI601C
CINTURA: NI702E
CAPPELLO: NI700A
BORSA: NI701A



ABITO: NI601C
CINTURA: NI704E

TUTA: NI606C
MAGLIA: NI127R



MAGLIA: NI125R
PANTALONE: NI309C





T-SHIRT: NI123V
PANTALONE: NI303D
MAGLIA: NI121V



MAGLIA: NI111B
JEANS: NI300J
CAMICIA: NI509BIS



CAMICIA: NI508C
PANTALONE: NI310C



MAGLIA: NI116V
PANTALONE: NI316C



CAMICIA: NI501C
MAGLIA: NI110B
PANTALONE: NI314C



ABITO: NI610C



ABITO: NI603C
CAMICIA: NI511K

PANTALONE/SALOPETTE: NI310C
MAGLIA: NI115V



GIACCA: NI206C
LEGGINGS: NI316C





ABITO: NI609C
STOLA: NI215R





BLUSA: NI509BIS
PANTALONE: NI305D

CAPPA: NI211B
PANTALONE: NI305D





MAGLIA: NI108B
PANTALONE: NI307D





DREAM BIG

GILET: NI126R
CAMICIA: NI510K
PANTALONE: NI304D
CINTURA: NI704E

GILET: NI114V
CAMICIA: NI511K
CINTURA: NI704E



60

PANTALONE/SALOPETTE: NI310C
BLUSA: NI510K



61



CAPPOTTO: NI201D
GIACCA: NI206C
LEGGINGS: NI313C
CINTURA: NI706D



CAPPOTTO: NI204D
BORSA: NI701A
CAPPELLO: NI700A





GIACCA: NI207C
PANTALONE: NI310C



MANTELLA: NI215R
BLUSA: NI505C
PANTALONE: NI312C



BLAZER: NI200D
PANTALONE: NI304D
CAPPELLO: AI700A



BLAZER: NI202D
TOP: NI100D
PANTALONE: NI303D

BLAZER: NI202BIS
GONNA: NI400BIS





ABITO: NI607B



MAGLIA: NI125R
PANTALONE: NI314C



MAGLIA: NI120V
PANTALONE: NI313C



ABITO: NI604C
CAPPELLO: NI700A
BORSA: NI701A





GILET: NI208D
PANTALONE: NI307D

BLAZER: NI203D
GILET: NI205D
PANTALONE: NI306D

CAMICIA: NI506C
PANTALONE: NI308D
CINTURA: NI702E





BLUSA: NI512K

74



CAMICIA: NI511BIS
PANTALONE/SALOPETTE: NI310C

75

CAPPOTTO: NI204U
BLUSA: NI509K
PANTALONE: NI305D



BLUSA: NI507C
CARDIGAN: NI210B
JEANS: NI300J
CINTURA: NI705E





CARDIGAN: NI214R
CAMICIA: NI511BIS

MAGLIA: NI128R
JEANS: NI300J



GILET: N1126R



GILET: N1126R
CAMICIA: N1511BIS



CAPPOTTO: NI204D
BORSA: NI701A
CAPPELLO: NI700A

numeroprimo

SEDE LEGALE

Via Svizzera nr. 4 41012, Carpi (MO)

SEDE OPERATIVA

Via dei Tessitori 107 - BLOCCO 18
CENTERGROSS 40050 FUNO DI ARGELATO (BO)

info@numeroprимocollection.it

www.numeroprимocollection.it



[numeroprимocollection](https://www.instagram.com/numeroprимocollection)



[numeroprимocollection](https://www.facebook.com/numeroprимocollection)

numer**o**primo

www.numeroprimocollection.it