

Giacca Melania

Pantalone Moira



Cappotto Alma




Cappotto Alma



Gonna a ruota Morgana
Gilettona Magda



A woman with long dark hair is standing in front of a modern building with a curved facade and large windows. She is wearing a brown long-sleeved top with a wide, draped collar and matching wide-leg trousers. She is also wearing brown pointed-toe shoes. The ground is paved with cobblestones. The sky is blue with some light clouds.

Pantalone Maxi

Blusa Mitzi

Abito Nancy

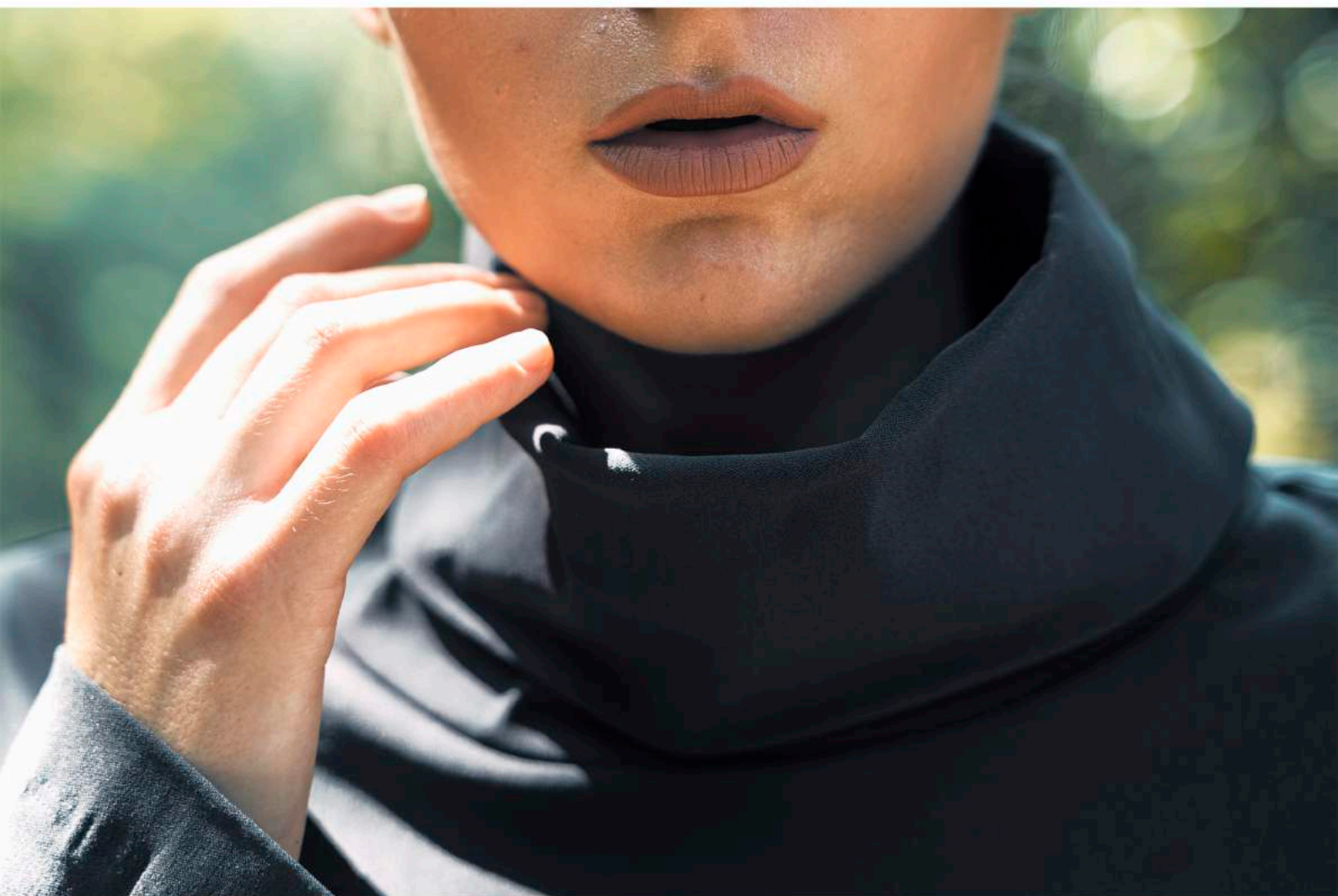


Pantalone Moira bengalina

Blusa over Birdi



Collo blusa Birdi



Spolvero Maja



Particolare spolvero Maja



Abito riga Irma



Abito riga Irma



Abito riga Irma


Abito con spacco Foy



Abito riga Irma

Abito con spacco Foy

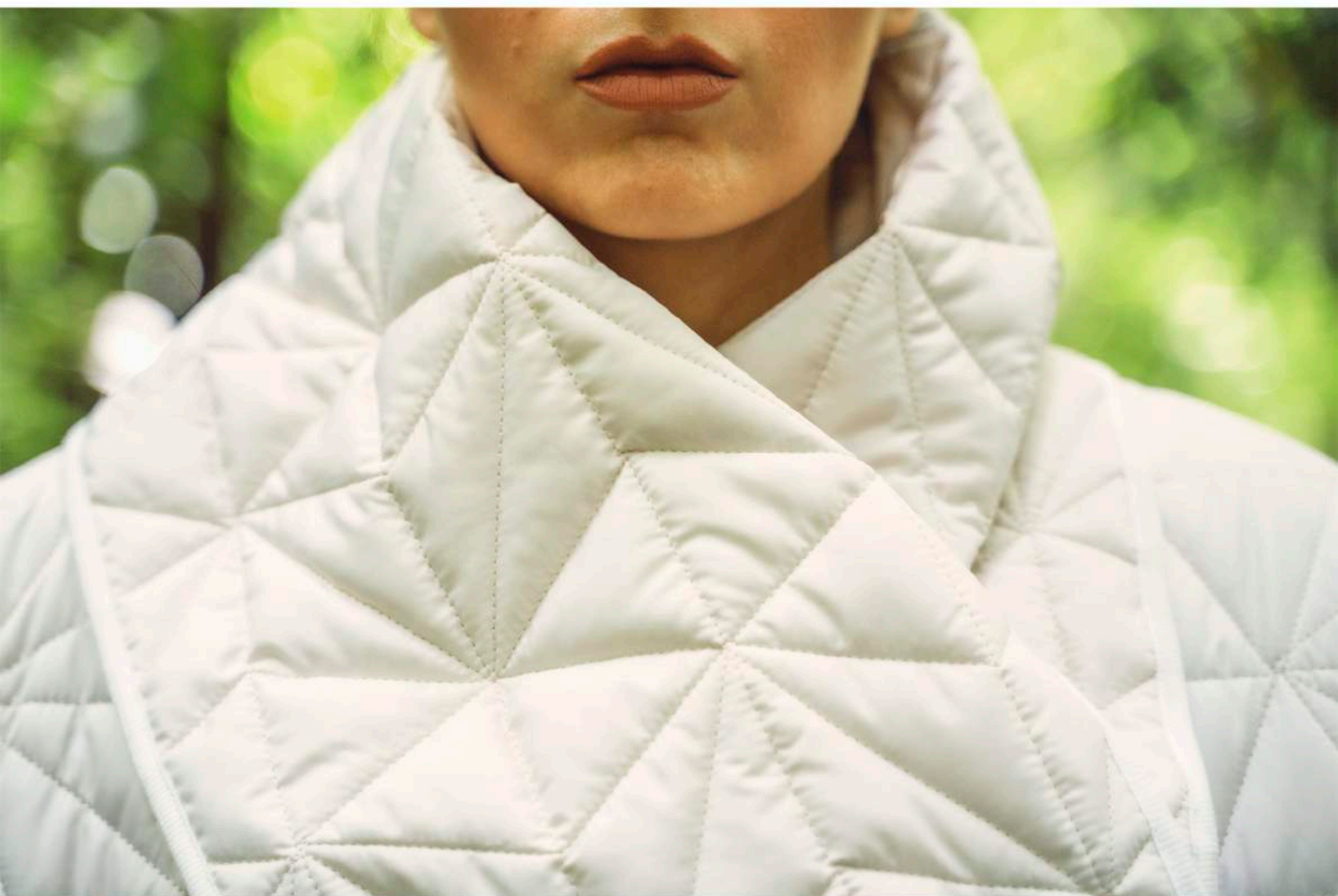




Abito riga Irma

Abito con spacco Foy

Cappotto trapuntino Zeni



Cappotto trapuntino Zeni



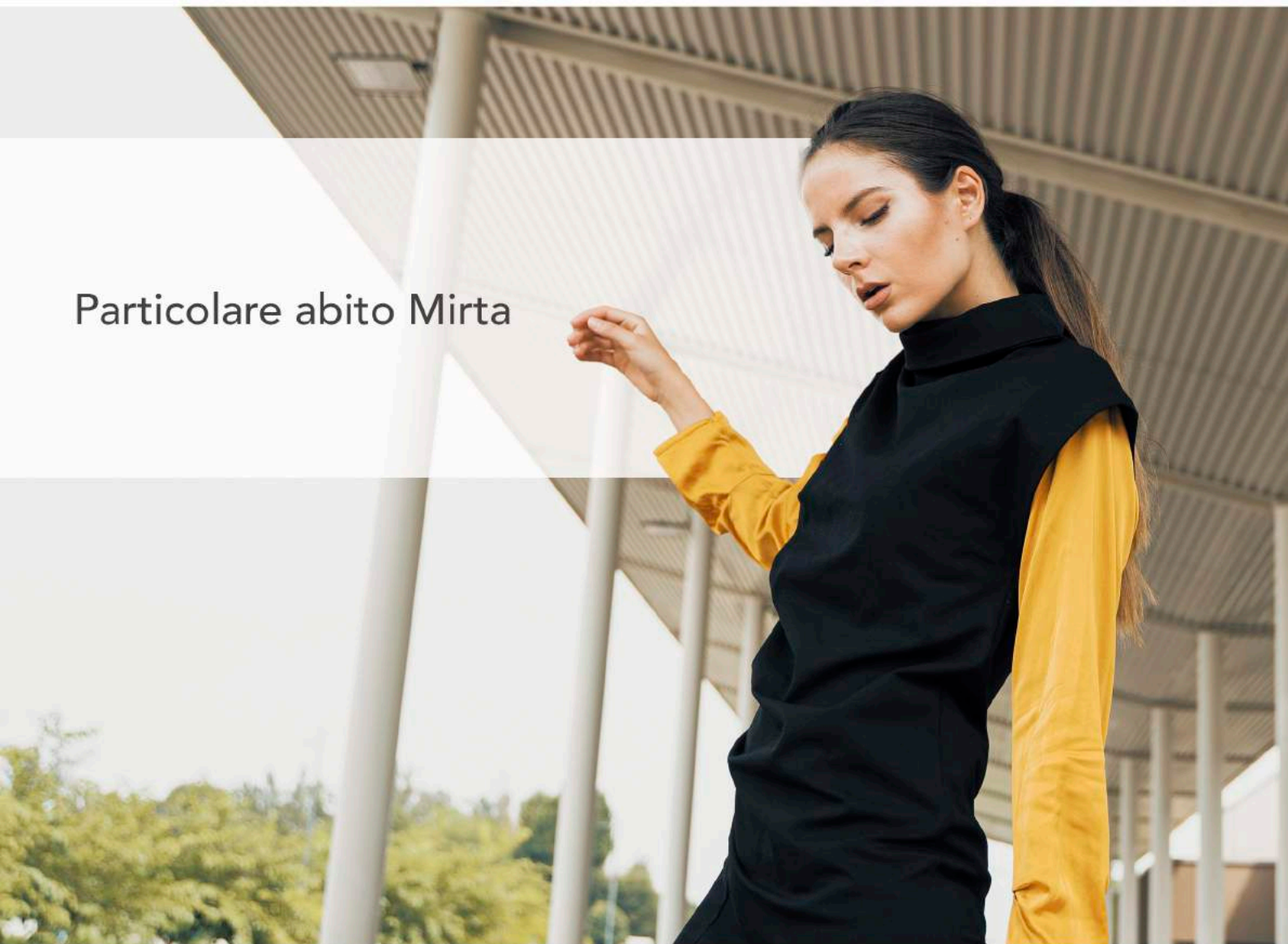
Abito Mirta



Abito Mirta



Particolare abito Mirta



Blusa pelle Hana

Bermuda pelle Holly

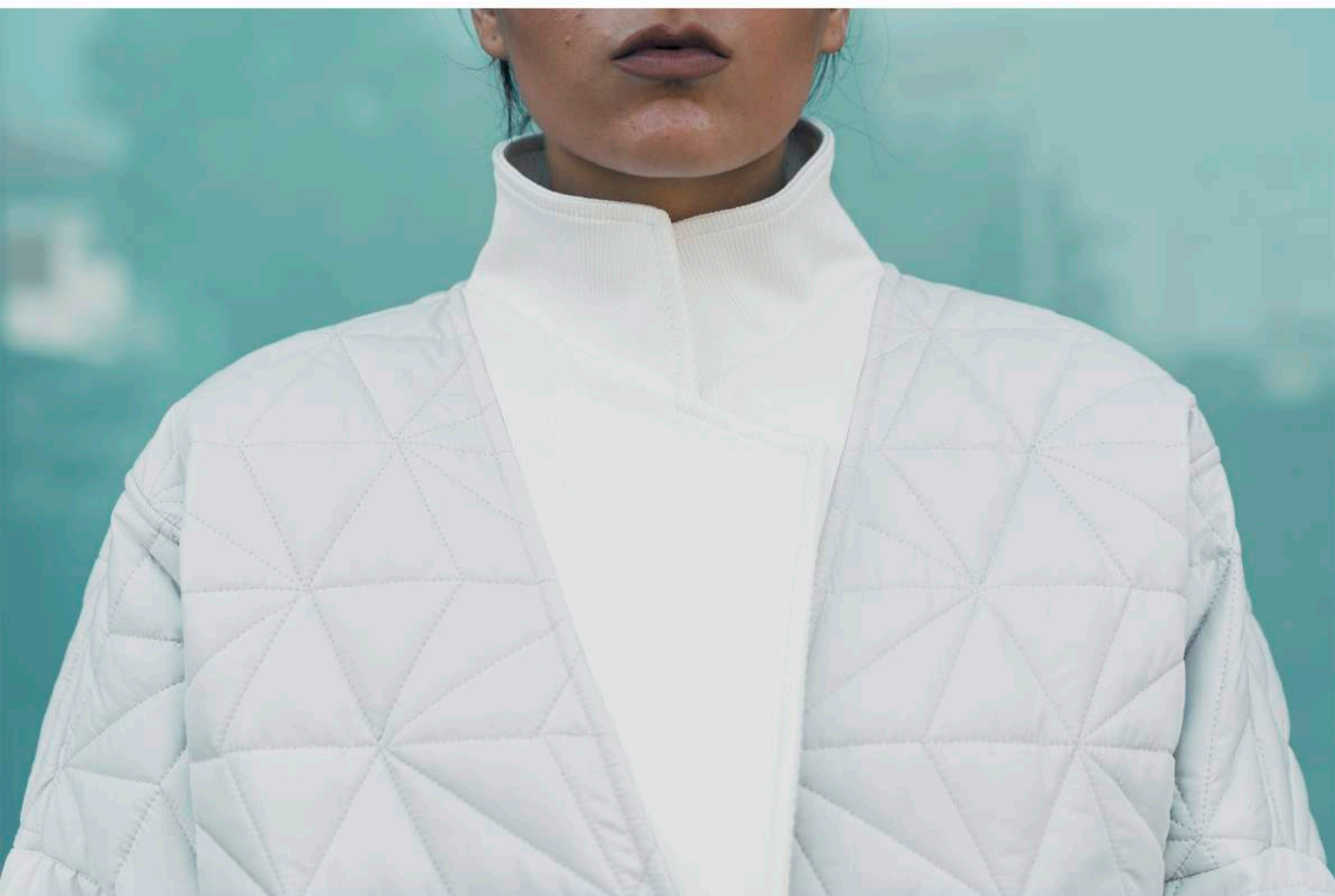


Blusa pelle Hana

Bermuda pelle Holly



Giaccone trapuntino Zita



Giaccone trapuntino Zita



Giaccone trapuntino Zita



Pantalone Milde
Blusa Margy



Blusa Margy



Particolare tasche pantaloni Milde



Cappa Aira



Pantalone Tess Fox Flic

Gilet pelle crespata Palmira



Pantalone Tess Fox Flic

Gilet pelle crespata Palmira

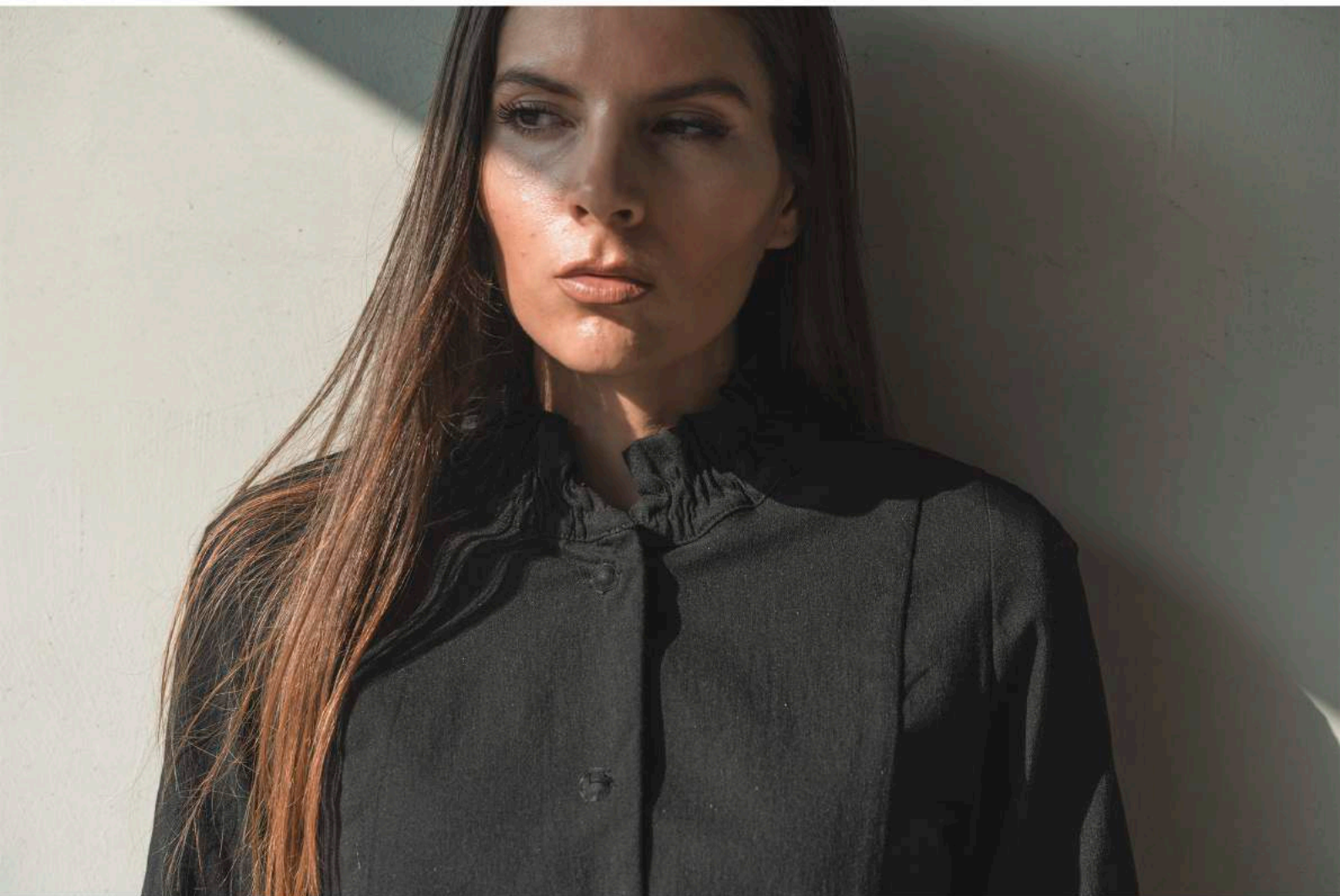


Pantaloni Flic

Giacca Fier



Particolare giacca Fier



Particolare giacca Fier



Cappellino pelle crespa



Blusa Ilda

Giacca pelle crespata Ping



Cappina Elly



Abito lungo Piper



Abito lungo Piper



Giacca punto milano /
pelle crespata Patty

